

Artist Palette

| | | |
|-----------------------------|------------------------------|-----------------|
| Product Type | Broadloom | |
| Style Number | 5A283 | |
| Construction | Multi-Level Pattern/Cut Loop | |
| Fibre | Ecosolution Q® Nylon | |
| Dye Method | 100% Solution Dyed | |
| Primary Backing | Synthetic | |
| Secondary Backing | Ultraloc® | |
| Protective Treatments | SSP® Shaw Soil Protection | |
| | u.s. | metric |
| Product Size | 12 ft | 3.66 m |
| Gauge | 1/10 in | 39.4 per 10 cm |
| Stitches | 11.0 per in | 43.0 per 10 cm |
| Average Density | 6056 oz/yd³ | 0.224 g/cm³ |
| Kilotex | | 10.08 |
| Total Thickness | 0.375 in | 9.53 mm |
| Tufted Weight | 36 oz/yd² | 1220.6 g/m² |
| Installation Pattern Repeat | 144 in x 172.8 in | 3.66 m x 4.39 m |



Recommended Installation Method

Direct Glue, Double Glue, Stretch-In

Product is recommended for areas with light to moderate traffic only.

Data + Testing

| | |
|----------------------------|--|
| Pill Test | Pass |
| Radiant Panel (Astm E648) | Class I |
| Nbs Smoke | Less Than 450 |
| Electrostatic Propensity | Less Than 3.5 kv |
| Cri Green Label Plus (Glp) | GLP2271 |
| Ada Compliance | >0.6, Meets the recommended static coefficient of friction for ADA walking surfaces and accessible routes*** |

Test Reports may be included or listed by the manufacturing/inventory style number as opposed to the noted selling style number.

Attributes + Certifications

Health & Wellbeing

Material Ingredient Transparency

Cradle to Cradle Certified® | Silver Level (Version 3.1)
NSF 140 | Gold

Indoor Air Quality

CRI Green Label Plus (GLP) | GLP2271

Climate Impact

Environmental Product Declaration (EPD)

3rd Party Certified in Accordance with ISO14044, ISO14025 & EN15804

Total Recycled Content

<1% (Pre-Consumer <1% | Post-Consumer 0%)

Product Packaging

100% Recyclable

Global Product Assessment

CE Marking (EN 14041) | 3rd Party Certified

Environmental Guarantee* | Re[turn] Reclamation Program* | Pickup & Delivery Available

Country of Origin** | USA

Green Leed Contribution Credit

MR Credit: Building Product Disclosure and Optimization
Environmental Product Declarations - Option 1: Environmental Product Declaration (EPD)

3rd Party Certified in Accordance with ISO14044, ISO14025 & EN15804

MR Credit: Building Product Disclosure and Optimization
Material Ingredients - Option 1: Material Ingredient Reporting

C2C Silver Level (Version 3.1)

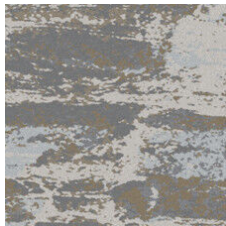
MR Credit: Building Product Disclosure and Optimization
Material Ingredients - Option 2: Material Ingredient Optimization

C2C Silver Level (Version 3.1)

EQ Credit: Low Emitting Materials
Option 1: Product Category Calculations

Green Label Plus Certification: GLP2271

Available Colorways



Earth 83210



Midnight 83420

Additional Information

* To learn more about the recyclability of our products and our Environmental Guarantee, please visit shawcontract.com/sustainability.

**Meets or exceeds all local and national regulations in country of manufacture. (Manufactured in an ISO 9001 & ISO 14001 certified facility or equivalent)

***This carpet is manufactured to be ADA compliant, but to be fully ADA compliant, the end-user must ensure the carpet is adhered to the floor and installed as outlined in the ADA standards.

[Installation Guidelines](#)

[Maintenance Guidelines](#)

Specifications are subject to nominal manufacturing variance. Material supply and/or manufacturing processes may necessitate changes without notice.

This product is an exclusive design and may not be duplicated in any manner. Use of this design in the creation of another product design is also strictly prohibited.

Visit shawcontract.com/testing for more information.



Corporate Headquarters +1 800 257 7429 | +1 706 532 7984 | Atlanta +1 404 853 7429 | Bengaluru +91 80 6773 0202 | Beijing +86 10 6568 588 | Chicago +1 312 467 1331 | Dubai +971 4 584 6956 | Hong Kong +852 2623 0371 | Latin America (Miami) +1 305 827 5912 | London +44 207 961 4120 | Los Angeles +1 800 233 1614 | Melbourne +61 3 9939 8543 | Mexico City +55 5010 7600 | Mumbai +91 22 6284 5050 | Nantong +86 400 800 7429 | New York +1 212 953 7429 | Paris +33 (0) 1 81 22 44 39 | San Francisco +1 415 955 1920 | Santiago +562 2431 5000 x 550 | São Paulo +55 11 3071 1702 | Shanghai +86 21 3338 4000 | Singapore +65 6733 1811 | Sydney +1 800 556 302